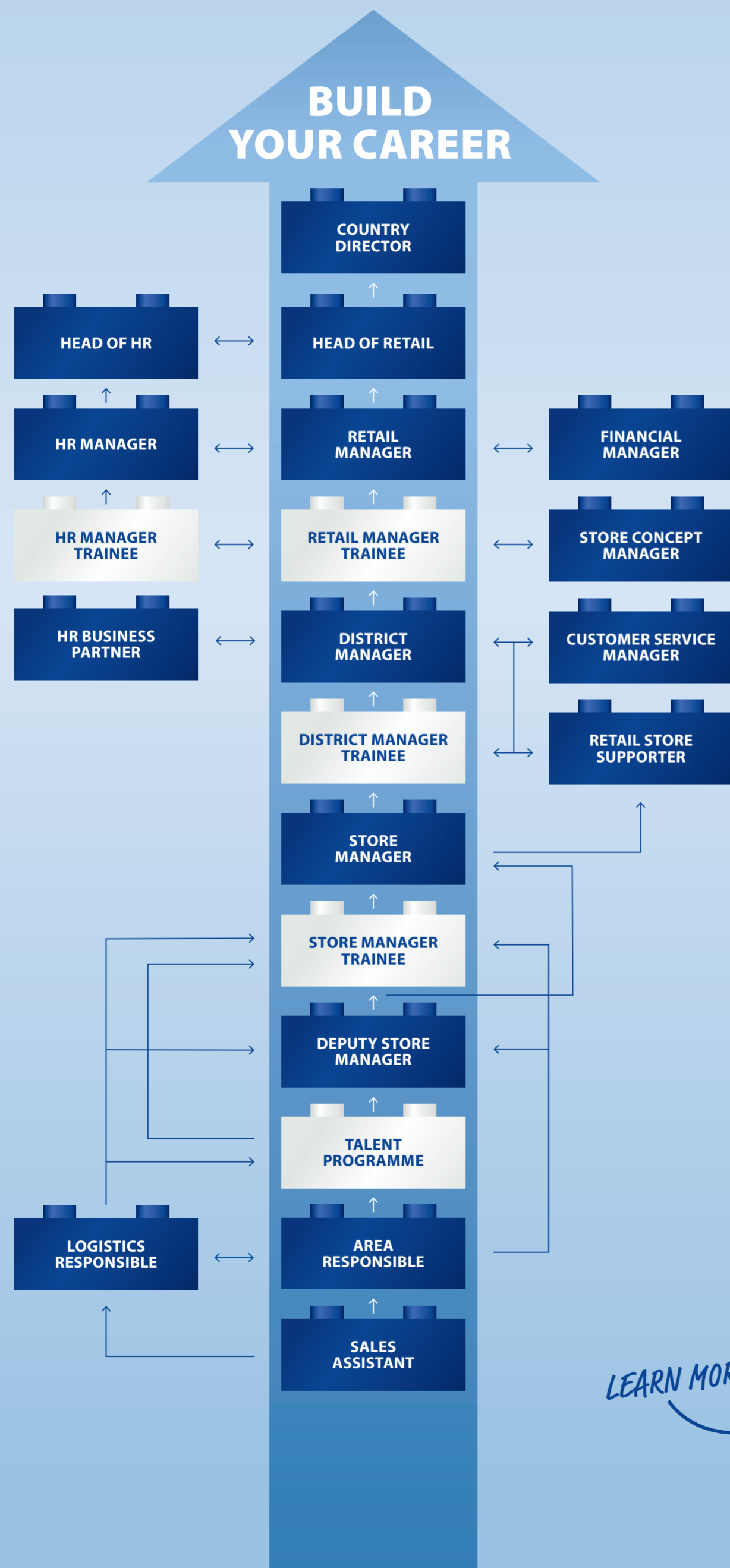


# MY DEVELOPMENT

*It's up to me!*



## CHOOSE YOUR OWN BRICK

- SWAP STORES
- SWAP AREAS
- CSC FLEX TEAM
- RESPONSIBLE FOR APPRENTICES
- JYSK INFLUENCER
- TRAINER
- SM RECRUITER
- SUPERUSER IN SYSTEMS
- SLEEP ACADEMY
- MENTOR
- INTERNATIONAL PROJECTS
- INVOLVED IN BUSINESS PLAN
- STORE ACTIVITY FLEX TEAM

LEARN MORE



# DO YOU SEE POTENTIAL?

JYSK Potential begins with high performance, knowing your business and executing in due time.

POTENTIAL TO BECOME A  
**RETAIL MANAGER?**

## HELICOPTER VIEW

With your eyes on the big picture, you see things from different perspectives and think out of the box.

POTENTIAL TO BECOME A  
**DISTRICT MANAGER?**

## SELF-INSIGHT

You are well aware of your own strengths and weaknesses. You listen to feedback, act on it and develop yourself.

POTENTIAL TO BECOME A  
**STORE MANAGER?**

## ROBUST

You recover quickly and see a setback or mistake as a challenge to get back on your feet and do it better next time.

## LEADING

You naturally lead through others and motivate them to take action.

## INITIATIVE

You naturally take on more tasks at your own initiative. You go above and beyond what is expected of you.

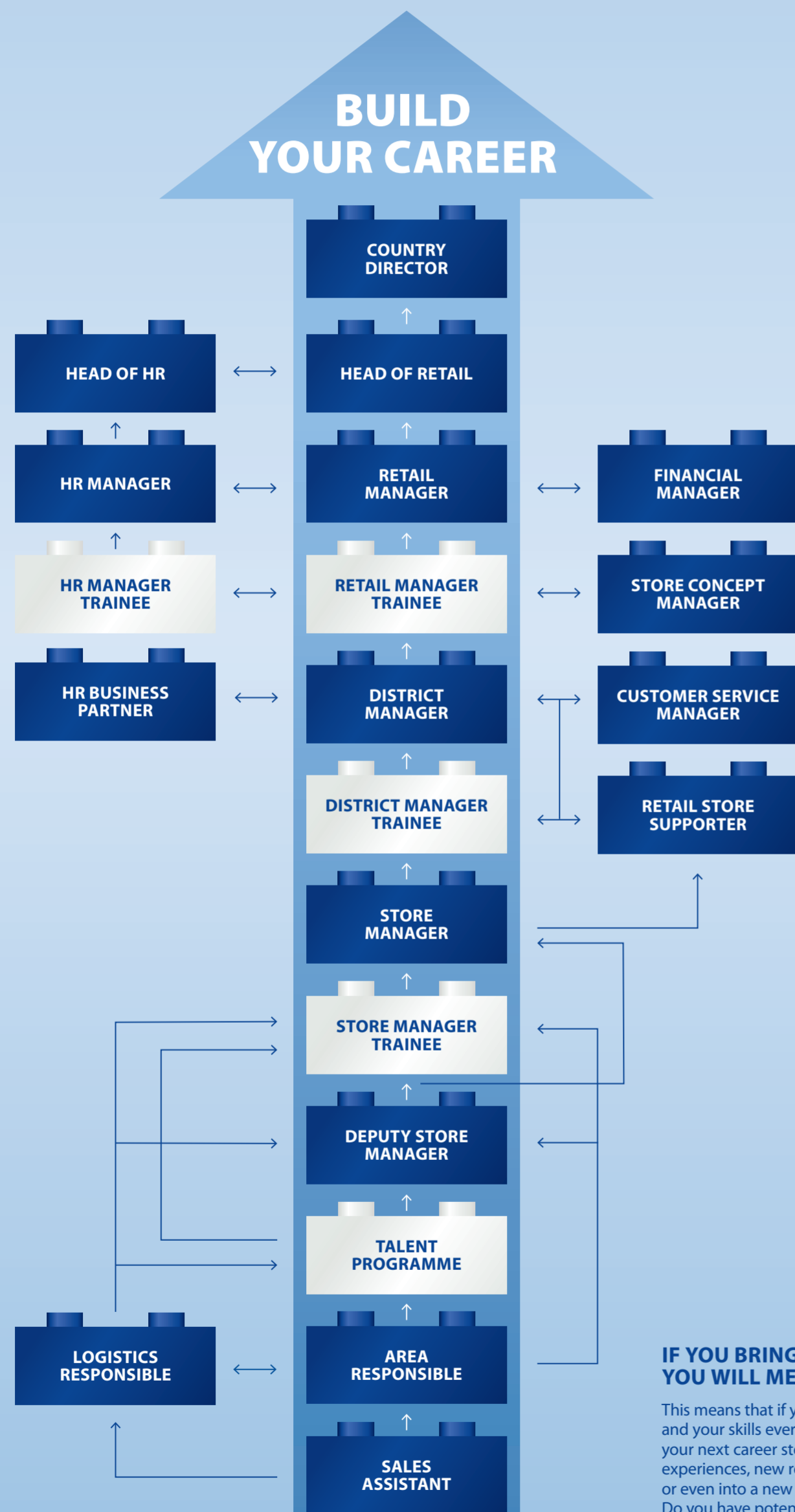
**JYSK  
VALUES**

**JYSK  
LEADERSHIP**



# MY DEVELOPMENT

*It's up to me!*



## IF YOU BRING DEDICATION, YOU WILL MEET POSSIBILITIES

This means that if you develop yourself and your skills every day, you can pursue your next career step and grow with new experiences, new responsibilities or even into a new position. Do you have potential to develop?

