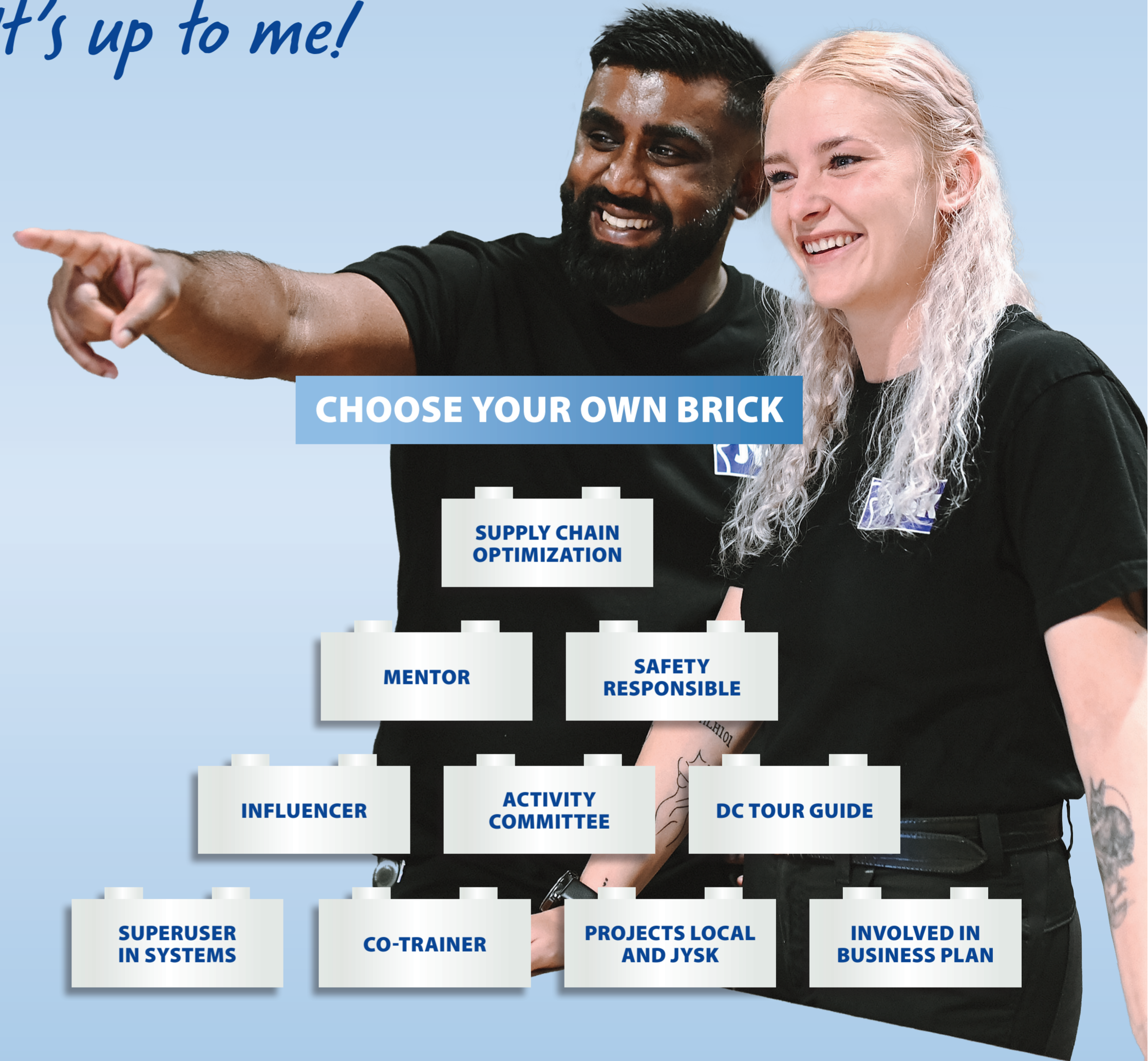


MY DEVELOPMENT

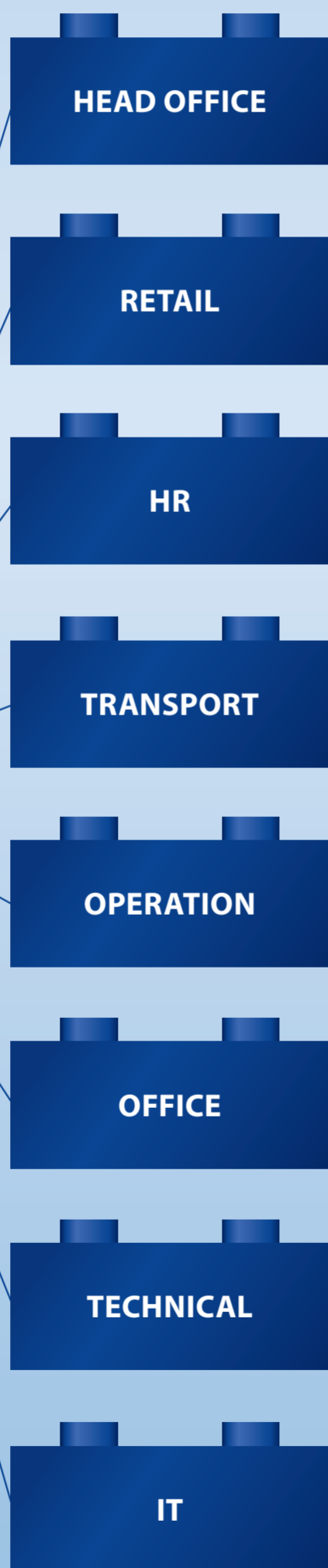
It's up to me!



CAREER PATH



AREA PATH



CHOOSE YOUR OWN BRICK



Learn more



DO YOU SEE POTENTIAL?

JYSK Potential begins with high performance, knowing your business and executing in due time.

POTENTIAL TO BECOME A PART OF THE
MANAGEMENT TEAM?

HELICOPTER VIEW

With your eyes on the big picture, you see things from different perspectives and think out of the box.

POTENTIAL TO BECOME A
DEPARTMENT MANAGER?

SELF-INSIGHT

You are well aware of your own strengths and weaknesses. You listen to feedback, act on it and develop yourself.

POTENTIAL TO BECOME A
TEAM LEADER?

ROBUST

You recover quickly and see a setback or mistake as a challenge to get back on your feet and do it better next time.

LEADING

You naturally lead through others and motivate them to take action.

INITIATIVE

You naturally take on more tasks at your own initiative. You go above and beyond what is expected of you.

**JYSK
VALUES**

**JYSK
LEADERSHIP**



MY DEVELOPMENT

It's up to me!

CAREER PATH

EVP LOGISTICS

LOGISTICS DIRECTOR

MANAGER

DEPARTMENT MANAGER

TEAM LEADER

TEAM LEADER TRAINEE

AREA RESPONSIBLE

WAREHOUSE/
OFFICE EMPLOYEE

AREA PATH

HEAD OFFICE

RETAIL

HR

TRANSPORT

OPERATION

OFFICE

TECHNICAL

IT



IF YOU BRING DEDICATION, YOU WILL MEET POSSIBILITIES

This means that if you develop yourself and your skills every day, you can pursue your next career step and grow into new experiences, new responsibilities, or a new position. Do you have potential to develop?

