

Store Front Manual

Updated March 2026



Introduction

The JYSK store front is our first point of contact with our customers and also a brand awareness element.

The purpose of the Store Front Manual is to describe the general guidelines and intentions applied to JYSK store fronts across JYSK.

It does not and will never consider every situation. It is however meant to prepare staff and suppliers working with store fronts to deal with different situations and act as a guideline.

Table of contents

Purpose.....	4
Responsibilities and process	5
1. Store front solutions	6
1.1 The store front options/solutions.....	6
1.2 Store front with portal	7
Examples – Store front with portal	8
1.3 Store front with logo sign	9
1.4 Store front with horizontal logo sign.....	10
1.5 Store front with square/vertical logo sign.....	11
1.6 Store front band	12
2. JYSK logo.....	13
2.1 JYSK logo • Logo building colours, size and scale.....	13
2.2 Building and portal colours	14
2.3 Store front sign proportions.....	15
2.4 Logo versions	16
2.5 Minimum demands for materials used for Store Fronts.....	17
3. Store front elements	18
3.1 General store front elements and composition – Overview of elements	18
3.2 General store front elements and composition – Mandatory elements.....	19
3.3 General store front elements and composition – Additional elements	20
3.4 The use of our Payoff.....	21
4. Building sides	22
4.1 Building sides	22
4.2 Outdoor banners	24
4.3 Wall and window elements	25
5. Other elements.....	29
5.1 Additional elements.....	29
5.2 Additional signage	31
6. Store front proposals.....	33
7. Resources	34
8. Appendix.....	35
8.1 Store front examples	37
8.2 Use of payoff on store front.....	40
8.3 Other buildings	43
JYSK ARENA.....	46

Purpose

For every store opening, it is vital that we create the best possible store front for the location, according to the guidelines described in this manual.

Whenever we have a store design activity, we should always update the store front to our current visual identity – Especially when any of the below mentioned situations exists:

- Broken/faded elements
- Outdated elements (e.g. Goose and old payoff should be removed)
- Replace neon tubes with LED

Complementary to the store front manual, the **JYSK Corporate Identity** describes the usage of the logo, payoff and fonts in JYSK.

Store front suppliers must have read the **JYSK Corporate Identity** and use it when making design proposals for store fronts.



Responsibilities and process

The Store Concept Manager has the responsibility for updating the store fronts for all store activities.

The Store Concept Manager is the contact person for the store front suppliers.

The Country / Development Manager is responsible for getting store front approval from the local authorities/landlords.

Retail Development have the superior responsibility for store fronts in JYSK and therefore all store fronts must be approved by Retail Development prior to production.

Store Concept Manager is responsible for sending store front proposal in accordance with the N-plan.



1.1 The store front options/solutions

Depending on store size, shape and the surroundings we have the following 5 main versions of store fronts.

- 1st priority:** Store front with portal
- general guideline :** Store front with logo sign (original dimensions)
Store front with horizontal logo sign
Store front with square logo sign
Store front band (Mainly used in shopping malls)

All detailed information for each version is to be found on the following pages.

Store front with portal



Store front with logo sign



Store front with horizontal logo sign



Store front with square logo sign



Store front band



1.2 Store front with portal

Store front with portal is our **primary** store front solution.

The portal construction is a combination of the following elements:

1. Logo constructed as described on page **2.1 JYSK logo • Logo building colours, size and scale.**
2. Blue plate formed as a portal (e.g. dibond, aluminium or similar material in the corporate colour)

Construction colours are always blue with white elements.

The portal construction is built up in aluminum “pipes”(example 40x40x3mm) and smooth sheet metal cassettes on top. The thickness is 2.0 mm with concealed mounting.

The color of the portal is RAL 5002 (NCS S 4055-R70B).

The portal “legs” should always be narrower than the “top part”.

The logo should as a rule align with the width of the entrance.

If the entrance is too wide the height of the top part defines the logo size and the positioning should follow the principles from page 13. Centering it on the blue surface.

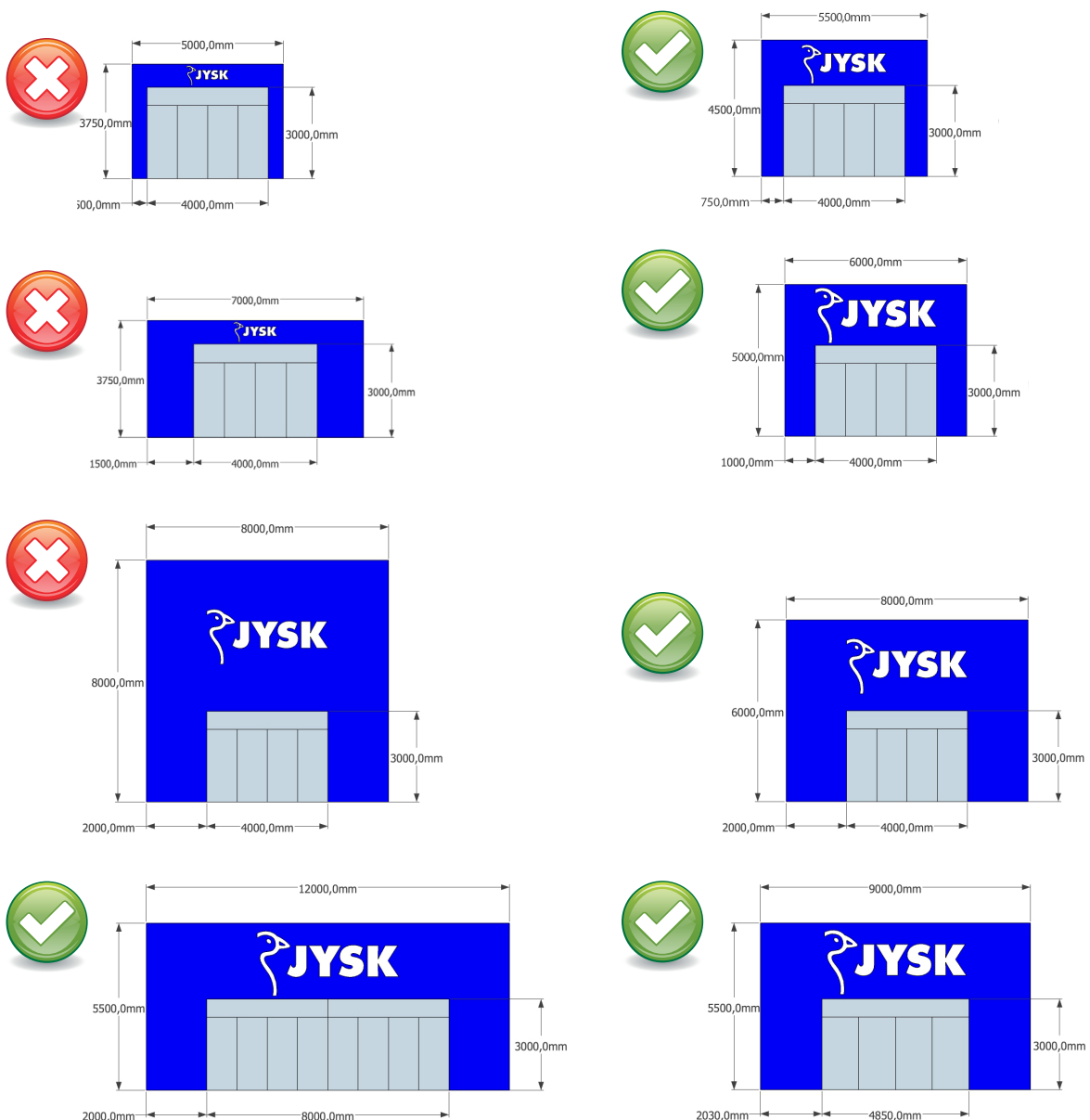


Examples – Store front with portal

When building a portal please keep in mind to ensure the portal size fits with the building behind it. The portal legs should never be wider than height of the top part containing the logo. Even when this is kept as a rule the appearance needs to take into account that the top part does not simply end up looking like a ribbon (first example below). Note that the width of the JYSK logo on the portal usually should be aligned with the entry and usually not exceed the width of the glazed area below.

The third example in the left column is within the usual parameters - but here the logo is starting to disappear if the rule of keeping the width of the glazed area is kept. To be avoided but we will evaluate a real life situation if it ever occurs.

The portal legs should be narrower than the top part is high. Preferably a width of half the height. The height of the top should not be more than 2 times the width of the portal legs.



1.3 Store front with logo sign

When working with a standard logo on the store front we always work the following criterias:

1. Logo constructed as described in 2.4 Logo versions.
2. Centered above the entrance
3. Size to be harmonized to the building (neighbors etc.)



1.4 Store front with horizontal logo sign

When the logo area is fixed in a wider dimension than the JYSK logo or an rectangular shape - we add blue to fill out the given surface.



1.5 Store front with square logo sign

When working with a standard logo on the store front we always work the following criterias:

1. Logo constructed as described in 2.3 Store front sign proportions
2. Centered above the entrance
3. Size to be harmonized to the building (neighbors etc.)



1.6 Store front band

The store front band is mainly used on stores placed in shopping malls and only if the surrounding stores has the same type of store front signage. The logo should be illuminated as cut out elements.

A store front band should in general start and end with a JYSK logo.

The color of the store front band must be RAL 5002

On stores in shopping malls we prefer to have a logo sign perpendicular to the store front to increase visibility. When the logo area is fixed in a wider dimension than the JYSK logo, add blue to fill out the given area.

Perpendicular logo



2.1 JYSK logo • Logo building colours, size and scale

The logo is the most important design element both above the entrance and on primary building sides.

The goose is a fixed part of the logo and should always be shown in combination with the JYSK letters and in the exact size and scale as shown on the right.

The JYSK logo must by no means appear in other colours or using other fonts.



Logo colours are defined according to the following international standards:

JYSK blue:

JYSK Blue	
HEX	143c8a
RGB	20 - 60 - 138
CMYK	100 - 80 - 0 - 10
PMS (print)	288
PMS (textile)	19-3955 TPX
RAL	5002, shine 50

RAL White:

5002, shine 50

NCS S 0502-Y, shine 30

JYSK grey:

Pantone:

Cool grey 7C

CMYK:

Cyan	20
Magenta	14
Yellow	12
Black	40

RGB: 151 153 155

RAL

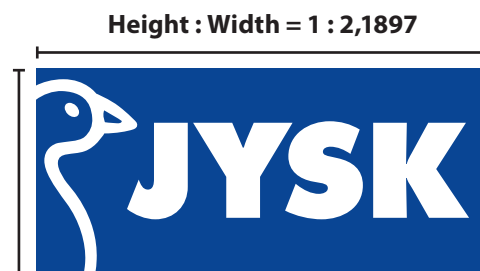
Grey: 7001



JYSK grey can ONLY be used for the stand alone pylon, direction/ navigation signage (see 5.1 Additional elements) and payoff signage(see 8.2 Use of payoff on store front)

Logo dimensions

When the logo is used "outside the box" the dimensions of the "white part" should always keep to the preassigned scale shown below. This is to ensure no part of the logo is out of shape, distorted or cut off.



2.2 Building and portal colours

Building part	Color
Outdoor door surfaces Outdoor Aluminum / Windows / Doors/Entrance	RAL 7043 gloss value 10
Portal / steel cassettes	RAL 5002
Facade color/ Canopy	RAL 7043



RAL 7043 gloss 10



RAL no. 5002

2.3 Store front sign proportions

1. Prio.:

Whenever possible we always create the store front sign in the exact format as the logo reflects.



When the format of the store front sign not equals the exact logo dimension we place the logo as shown in the example below.



The respect distance from the "K" to the edge, must be the same as in the JYSK logo.

2.4 Logo versions

The logo is available in different constructions/versions. Choose the appropriate signage solutions that fits the surroundings.

The cut-out version



A powerful and elegant sign solution. Only used on store fronts

The light box version



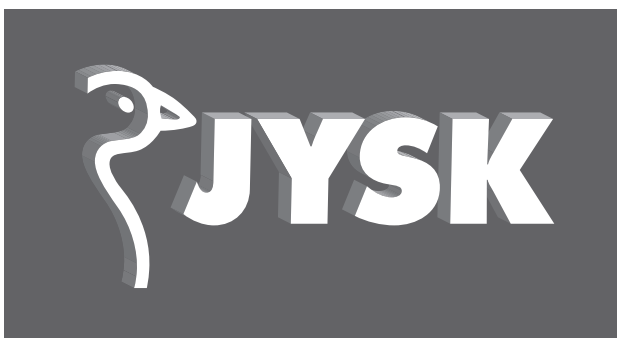
A cost-efficient solution. The light box is used on primary and secondary building sides and for the store front band.

Third solution:

could also be an aluminum sign/dibond with foil letters and illuminated with external spotlight.

Only to be used on secondary sides

Cut-out elements



Cut-out elements without lighting placed directly on walls, always in contrast to the background.

Only to be used in special cases.

2.5 Minimum demands for materials used for Store Fronts

To create and maintain JYSK as a strong, international brand our store front perception is crucial.

Therefor we want to secure our store front level are at an acceptable level for at least 5 years.

Please follow our minimum demands pointed out below.

Solution	Minimum demands
Portal	Build up in aluminum or dibond
Lightbox aluminum	2mm aluminum box and white Altuglas® acrylic or similar
Lightbox textile	Front backlit banner Blue Avery 794 Blocker foil 3M 3635-22
LED	50.000 hours guarantee / 6500 Kelvin
JYSK pylon	Build up in aluminum or dibond Pylon powder coated ral 5002 and cutout logo with acrylic behind – LED light install in pylon – in the bottom vinyl grey Avery 725 and JYSK logo.
Grey foil - outside	ORACAL 751, Avery 725 or similar quality
Grey foil - inside	Avery 745 or similar quality
Dark grey foil inside above 320cm	Avery 759-02

3.1 General store front elements and composition

– Overview of elements

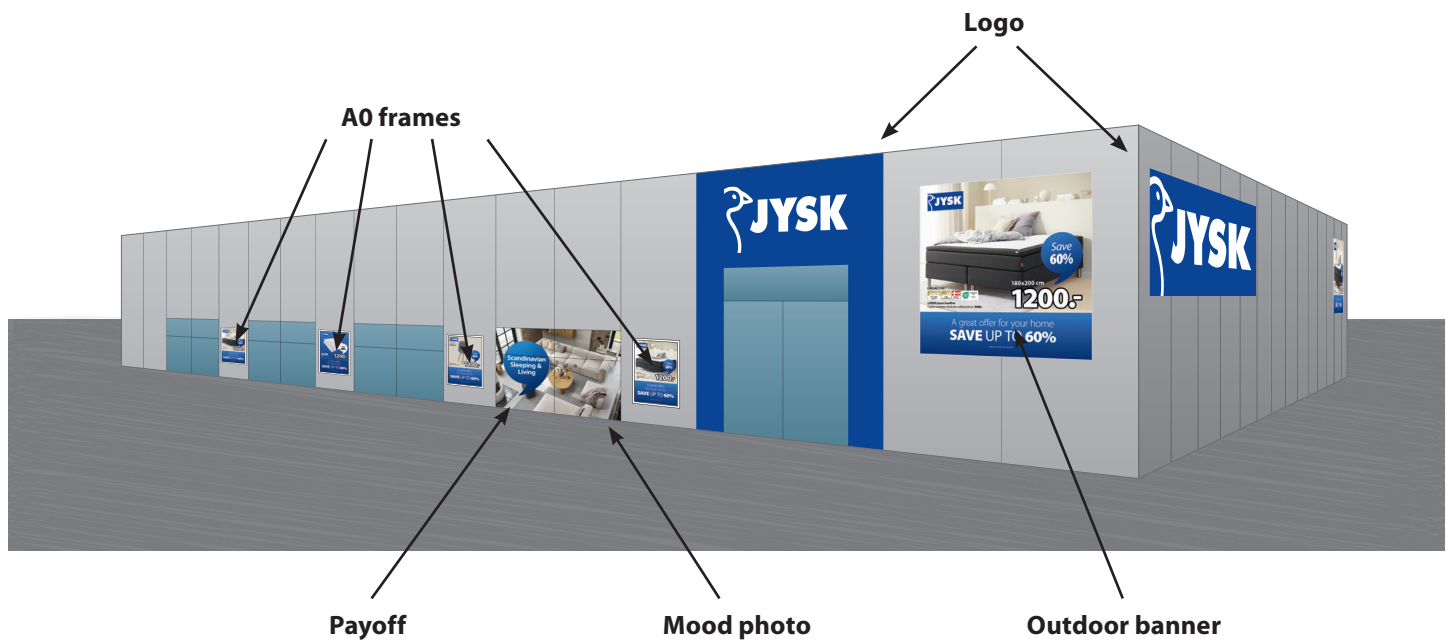
The JYSK store front elements are divided into two groups – Mandatory elements which needs to be on all JYSK store fronts and additional elements which should be added whenever possible.

Mandatory elements

- **Logo**
- **A0 frame (when allowed)**
- **Outdoor banners (when allowed)**

Additional elements

- **Mood photos**
- **Payoff**



3.2 General store front elements and composition

– Mandatory elements

Any JYSK store front always needs to carry the following elements:

- **Logo**
- **A0 frame (when allowed)**
- **Outdoor banners (when allowed)**

Definition of elements

- A0 frame are placed on building walls or windows and inserts are changed according to the activity calendar.
- **Outdoor banners** are used on as many stores as possible to emphasize campaign offers/themes.

A0 (inserts)



Outdoor banners



3.3 General store front elements and composition – Additional elements

In addition to the mandatory elements the store front also includes these additional elements when possible and whenever needed:

- **Mood photos**
- **Payoff**

Definition of elements

Mood photos

When fixtures are placed up against windows these are covered with mood photos. Only photos specifically dedicated for stores can be used for this purpose. These will be updated with set intervals of approximately 2 years.

Available and approved photos can be found at
<https://jyskblueline.com/photos-store-front>

If mood photos are needed on the store front first priority is always to show the sleeping competence on the store front and secondary to show the living competence.

Mood photos



3.4 The use of our Payoff

The Payoff “Scandinavian Sleeping & Living” is an additional elements for the store front and is to be used when size and format allows.

The payoff – Scandinavian Sleeping & Living – must always be written in English and in the font Myriad Pro semi bold.

The payoff can be used on the following elements:

- **A0 frame (when not running campaigns)**
- **Mood photos**

Use of payoff in speech balloons for inserts



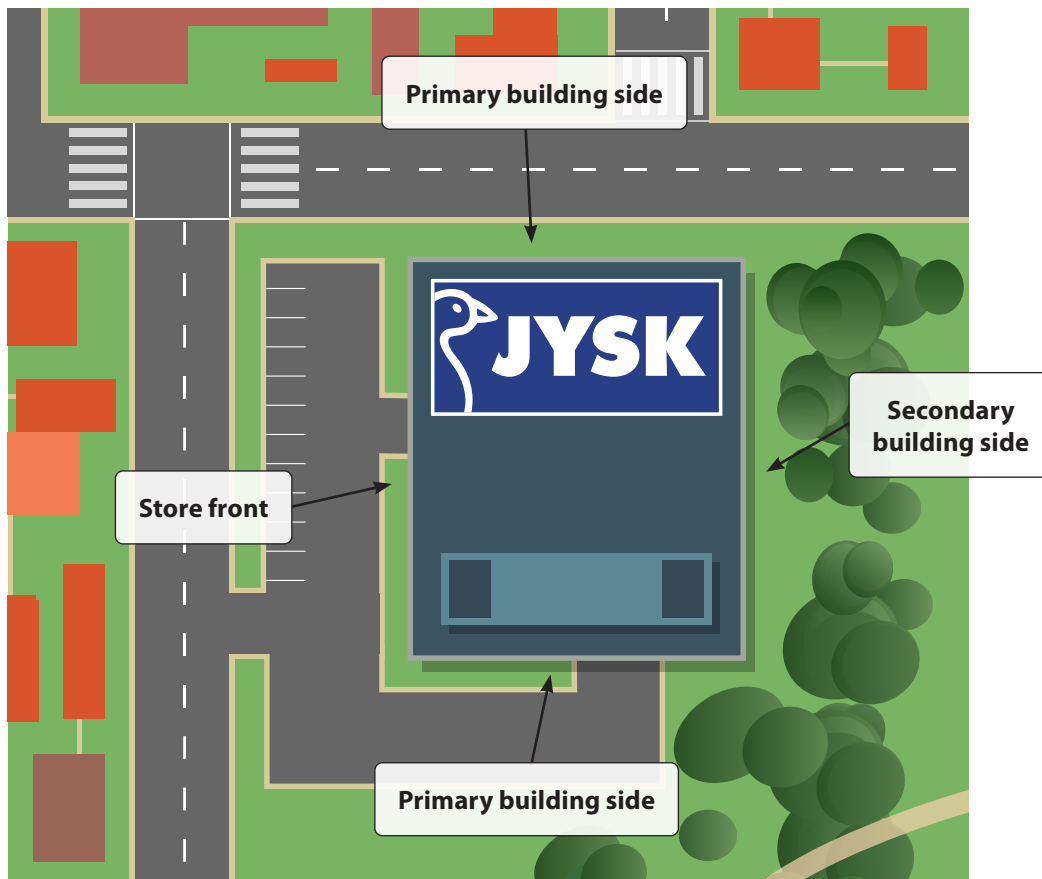
Use of payoff in mood photo



4.1 Building sides

The outside store is divided into 3 different building sides:

- **Store front**
The store front is where the entrance is located.
- **Primary building side**
Primary building sides are very visible for customers.
- **Secondary building side**
Secondary building sides are not visible for customers.



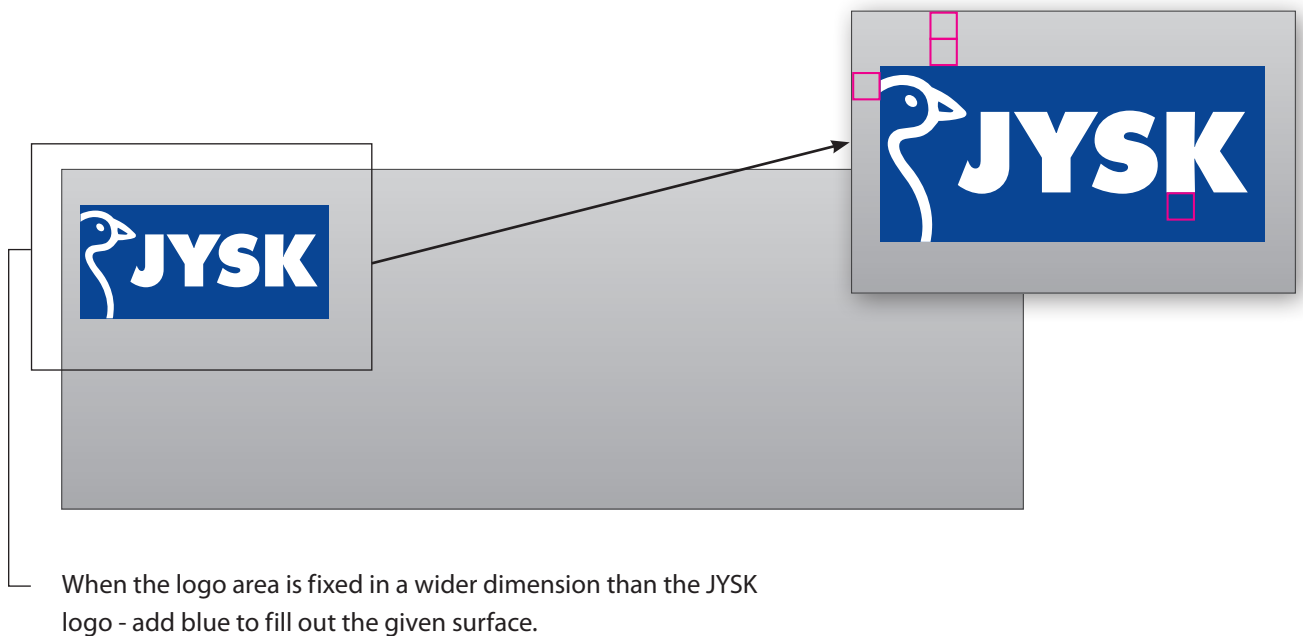
On primary building sides we only use a JYSK logo

The logo should be placed either:

- in the left side only
- in the right side only
- in both sides – depending on what makes sense.

The distance from the logo to the corner of the building is specified on the illustration below.

The height of the logo must be no more than 1/3 of the height of the building – in some cases the logo should be smaller to harmonize with the building dimensions/surroundings.



Logo construction on primary building sides:

We use the standard light box with LED on all primary building sides.



4.2 Outdoor banners

Outdoor banners must be placed on all store fronts where it's possible and are considered as a part of the total store front layout.

They are a fantastic element to communicate campaign/product information to the customers.

Size and scale of banners

All banners should be a square format in the below sizes:

- 3x3,
- 4x4,
- 5x5
- etc.

If necessary outdoor banners are also available in dimensions 1:2 and 2:1.

Fixed size from landlord

When we are given a specific size from the landlord that will be accepted.

The banner system must be of a type where the store staff can change the banners themselves.

Outdoor banners must be illuminated and are the only store front element where external lighting is allowed.

Min. distance from the ground = 1,0 meter.

They must not cover any other signage elements.



4.3 Wall and window elements

Introduction:

To have a commercial approach and attract attention towards our stores, we use A0 frames. The frames comes in 2 solutions:

Click frame to be mounted in wall – size 1255 x 907 mm

A0 LED to be placed in windows - size 1229 x 881 mm

The total number of A0 frames per store is preferable 4 - maximum 6 when needed.

Uneven number of frames can be used, when it makes sense for the specific location.

2 A0 frames are always dedicated to campaign and must be closest to the entrance/ where there is the most customer flow.

Yellow frames = campaign

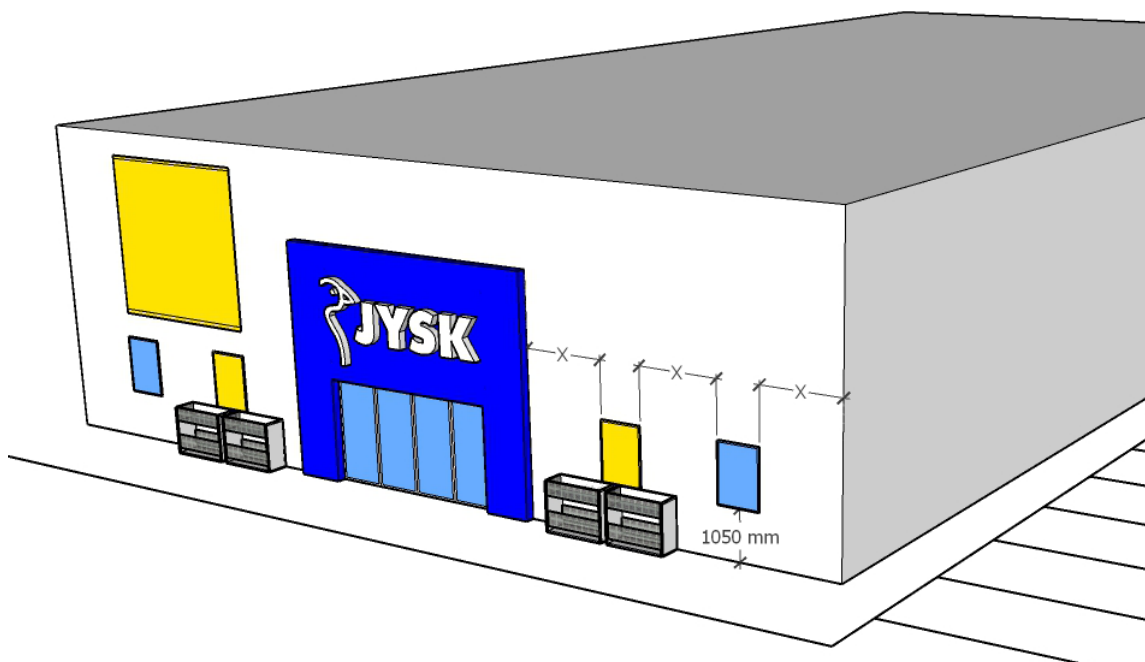
The rest of the frames is standard content

Blue frames = standard content (not activated during campaign)

Wall:

A0 Frames on the facade are to be spaced evenly between portal / entrance & edge of the building.

A0 frames must be placed 1050mm above ground to leave room for outdoor trolleys.

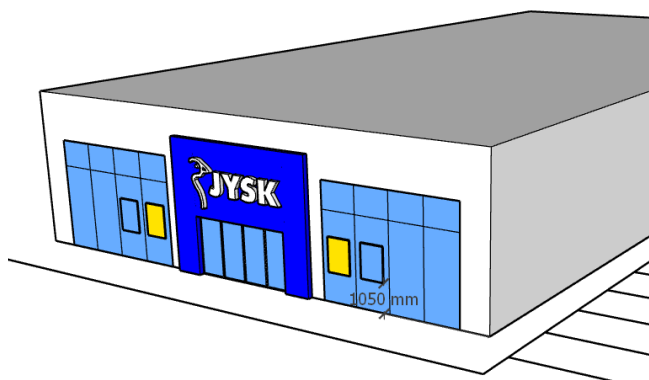


Window

The LED A0 are to be hung inside the windows. Align w. window panes when ever possible.

In the planning of the A0 frame placements - ensure the customers have a wide and open view into the store.
For stores with a very long glas facade it is allowed to place 6 x A0 frames in total. The distance between the A0 pair must be ~6 meters
- see sketches below

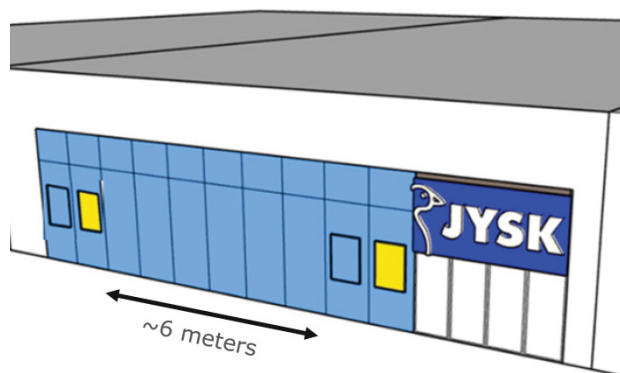
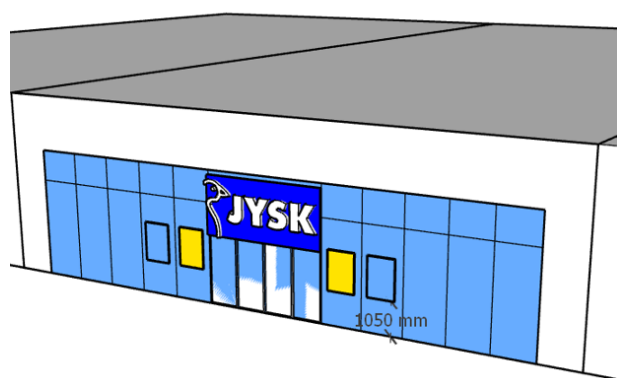
A0 frames must be placed 1050mm above ground (outside) to leave room for outdoor trolleys.



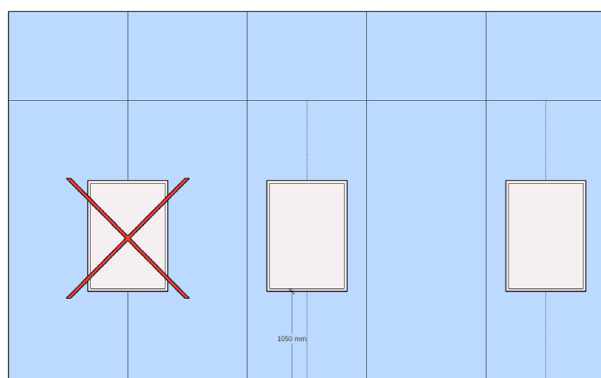
All glass facade(shopping mall)

The LED A0 are to be hung inside the windows.

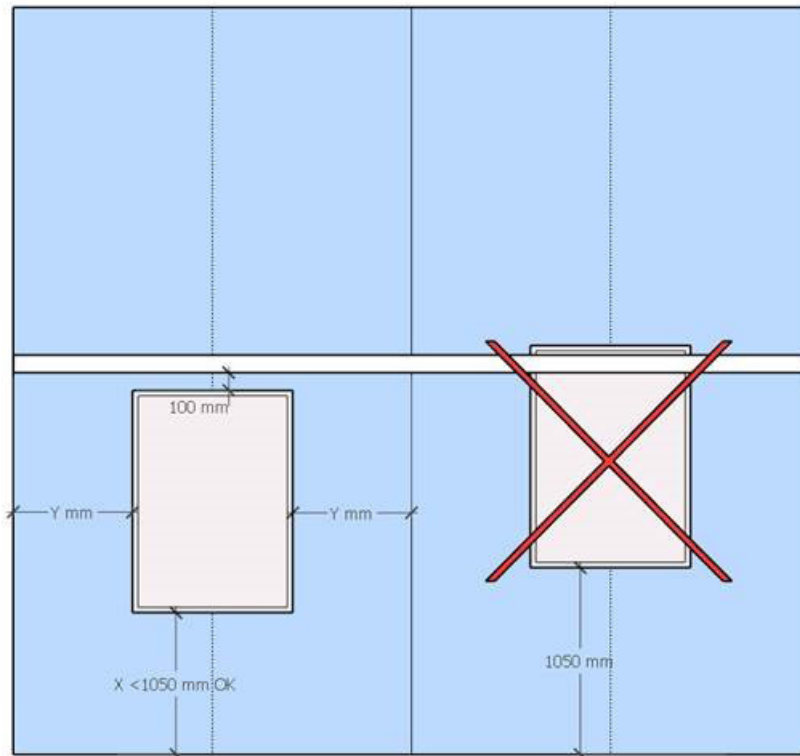
Align w. window panes when ever possible.



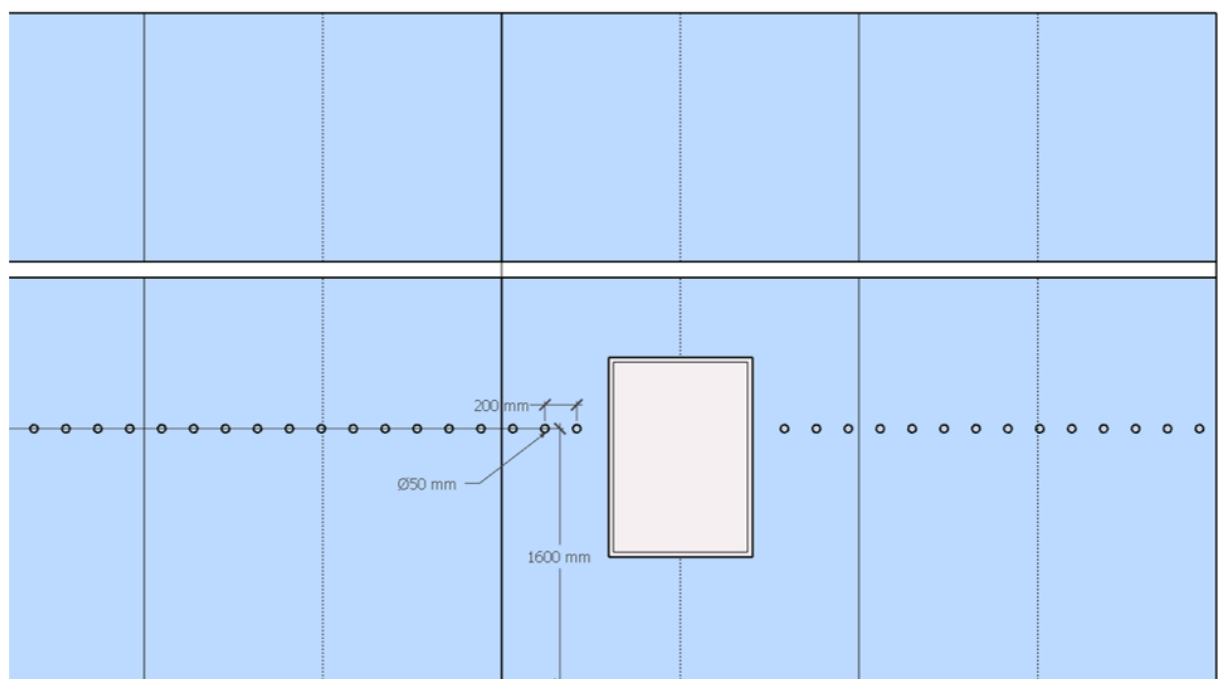
Avoid hanging the frames behind a joint in the glass panes if possible.



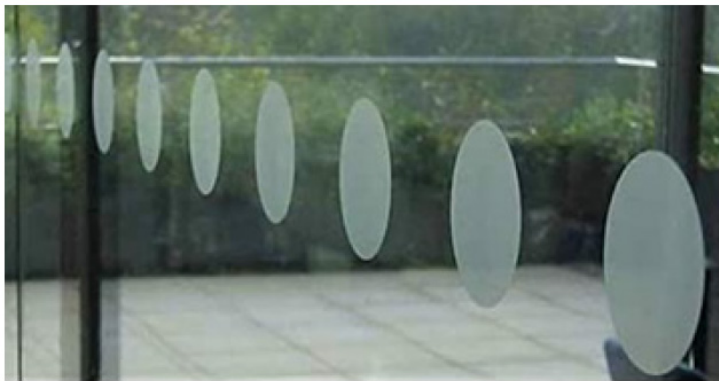
Always place the frame so all of it is visible through the window
– disregard the 1050mm from bottom if necessary



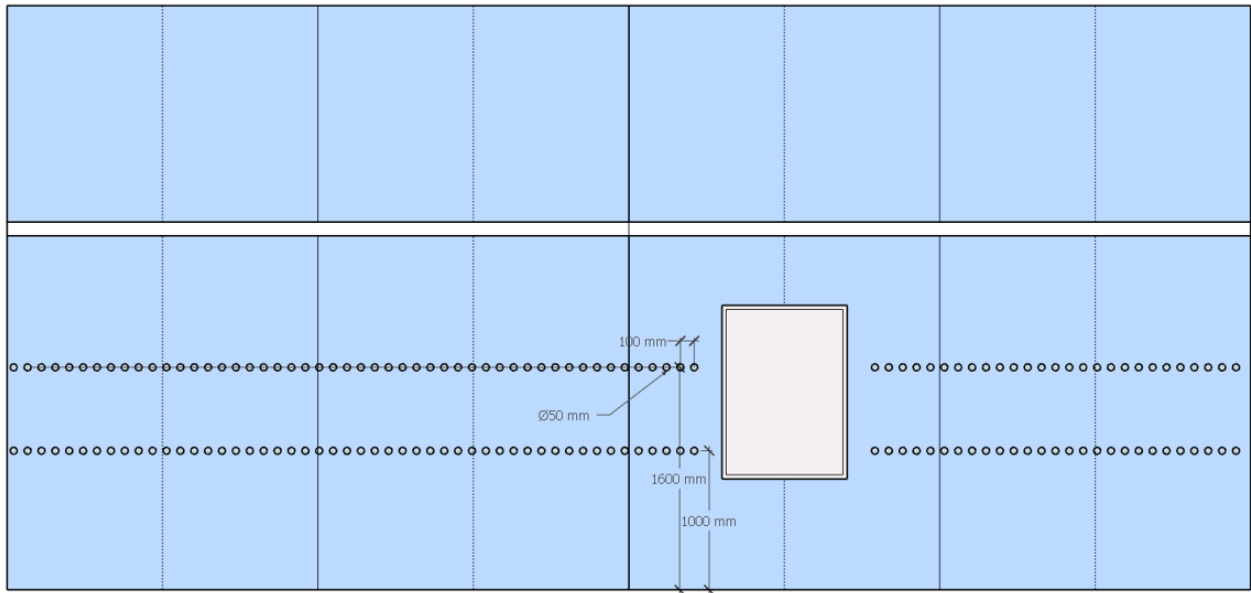
In the case of a landlord requiring window manifestation markings the following principles should be used.
Standard Ø50mm matt foil dots, supplied by store front vendor. 200mm a part.
If allowed the A0 Frames create a break in the dots, to avoid covering any message.



Picture below as reference in material Macal 798-02



If 2 levels of dots are required, please follow the below guideline:



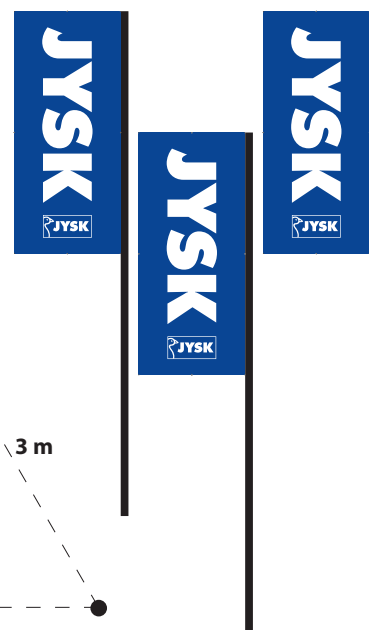
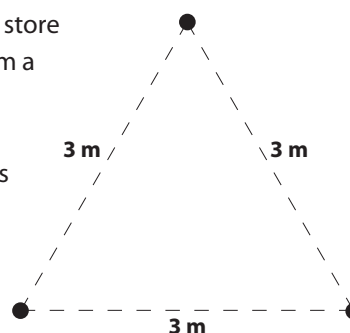
5.1 Additional elements

Flagpoles

Flagpoles are a part of the total outdoor concept for a JYSK store and they are as well used to draw attention to the store from a long distance.

The most common use of flagpoles is by placing 3 flagpoles together, forming a triangular shape.

The height of the flagpoles must be min. height 10m
- or according to local rules



Flag for flagpole



1750x4000mm



1450x4000mm



1500x3000mm



1000x2750mm

Pylons

The pylon is used to draw attention to the store from a long distance.

The JYSK logo in the grey area, must always be aligned with the vertical JYSK letters

Small: 1000 x 2500 mm

Large: 2000 x 5500 mm

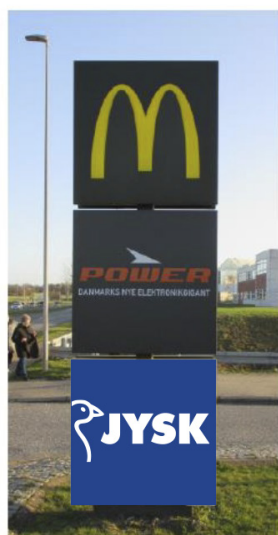
They are made in aluminium or polycarbonate mounted in a concrete base. LED lighting is used if the pylon is produced with light.

Common pylons

When establishing signage on common pylons, the signage should fit the proportions of the space on the pylon – Follow the rules described on page 13 regarding logo dimensions.



Pylon



Common pylon

5.2 Additional signage

The JYSK logo is to be used on the following signs in connection to the store:

- Goods delivery / Collection point – standard size 500x1300mm
- This sign must not be dominating on the building



The logo is NOT TO BE USED on any other elements like:

- Staff room signs
- Toilet signs
- Office signs



Navigation

Whenever we use signs for navigation you should always place the JYSK logo below the communication.



6. Store front proposals

Store front proposals must as a minimum include the following:

- Photos of the entire store front (all building sides) where store front elements are added.
- Overview of the individual elements with measurements and material description.
- Photos of other stores nearby.

For new constructions where it isn't possible to take photos realistic drawings must be provided.

In general the store front should be updated for **all store activities**. Light boxes can be kept if the conditions is acceptable but old payoff, store front band and window decoration must as a minimum be updated/removed.

The Store Concept Manager **MUST** send a store front proposal to Retail Development for ALL store activities.

Any questions regarding this manual, please contact Retail Development.

7. Resources

All relevant store front material is available on
[“https://jyskblueline.com/”](https://jyskblueline.com/)

This site is for store front suppliers and has limited content.
For example specific campaign graphics and strategy related
materials are omitted on this site.

- Logo info and files, store front photos etc. are available.

8. Appendix

8.1 Store front examples

Examples of store fronts will be added continuously.



8.1 Store front examples



Angled building with portal



8.2 Use of payoff on store front

Applies only for JFR, JIT, JES/JPT, JUK and new countries.

We want to have the opportunity to communicate to our customers who we are, what we are selling and where we are from. Besides the JYSK logo we want to use an additional sign with our payoff "Scandinavian Sleeping & Living"

Rules:

- **The background must follow our JYSK grey color and letters must be white and illuminated.**
- **The respect distance must be 5% of the total length of the sign.**
- **The sign must always be divided from our JYSK logo.**



Use of payoff on store front band

When the payoff is used in a store front band, it must be used next to the JYSK logo as shown below – and must follow the below criteria's:

- The size of the payoff should be minimum 50% and maximum 70% of the letters in the logo – based on the height of the "S" in the payoff.
- A space equivalent to the width of the "K" in JYSK must as a minimum be clear before and after the payoff.
- Must be centered vertically (according to the "S") and horizontally.
- When more that one JYSK logo is present the payoff is to be centered between the JYSK logos.







8.3 Other buildings

For other buildings than stores we have the following rules for applying our logo to the facades.

Only the JYSK logo

Primary use

Whenever only the JYSK logo needs to be present please refer to the same rules as to normal store fronts in this guideline.



Secondary use

In some cases the JYSK logo is not an option due to local legislation or requirements from the building owners. In these cases the preferred option is to remove the blue background in the logo, so that only the goose, "JYSK" and the outline remains in backlit white LED. If this is also not an option the remaining options must be approved by JYSK Nordic Marketing Director.



JYSK logo together with an additional name or element

Primary use

Whenever JYSK is presented in combination with another name, area or entity on a building it must be the primary JYSK logo (backlit LED) combined with black letters on light background or white letters on darker backgrounds, that are also backlit, for the subsequent word. The subsequent word after the JYSK logo must follow the rules described below:



Text settings: Myriad Pro Bold, All Caps, Kerning: Optical, Tracking: 0



The text should always have the same height as "JYSK" and be aligned to fit top/bottom.



The distance from the JYSK logo to the text is defined by the width of the Y in "JYSK".

Secondary use

If the JYSK primary logo is not an option the preferred option is the JYSK logo without the blue box in backlit white LED. If this is also not an option the remaining options must be approved by JYSK Nordic Marketing Director.



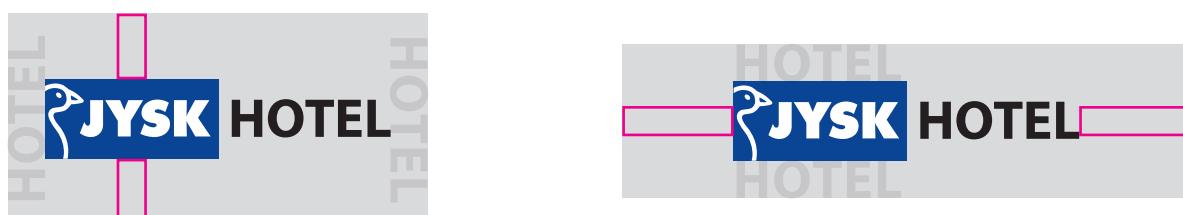
Secondary signage

For other signs in connection to other types of buildings the same rules apply as to the stores. However when JYSK logo is written together with an additional name or element the primary choice is the primary JYSK logo followed by the subsequent word in black letters on light background or white letters on darker backgrounds. If this is also not an option the remaining options must be approved by JYSK Nordic Marketing Director.



Our preferred solution is to have the subsequent word in black letters – But on darker backgrounds the best solution can be white letters.

In cases where the background size is predetermined the size of the JYSK logo and subsequent word is defined by either the horizontal or vertical margin which is defined by the letter height in the JYSK logo.



JYSK Arena



JYSK ARENA





